

Technical Specification

Basic parameter

Machine weight	8500 kg
Bucket capacity	0.32 m ³
Width of bucket	875 mm

Performance parameter

Engine model	Yanmar
Engine power	56.5/2200 kW/rpm
Gradeability	35 °
Max. digging force of arm	41 kN
Max. digging force of bucket	56 kN
Traveling speed	2.9/4.3 km/h
Max. hauling force	68 kN
Slewing speed of platform	10~13 rpm

Operating parameter

Max. digging height	7140 mm
Max. digging depth	4160 mm
Max. digging radius	6630 mm
Max. digging radius on ground level	6491 mm
Max. dumping height	5100 mm
Min. slewing radius	2144 mm
Max. vertical digging depth	3588 mm

Transportation dimension

Overall length of transportation	6425 mm
Overall width	2260 mm
Overall height	2705 mm

Other Parameter

Width of undercarriage	2150 mm
Length of track	2783 mm
Width of track	450 mm
Height between undercarriage and ground	380 mm
Height between platform and ground	790 mm
Platform tail turning radius	1881 mm
Track gauge	2200 mm
Fuel tank capacity	151 L
Hydraulic oil tank capacity	125 L



YC85-9

Machine weight : 8500 kg

Bucket capacity : 0.32 m³

Engine power : 56.5/2200 kW/rpm



Guangxi Yuchai Heavy Industry Co.,Ltd.
Address:No.168 Tianqiao Road, Yulin, Guangxi, China
Tel: +86-775-3223505,3223500
Fax:+86-775-3289578
Email: dig@yuchai.cn, ychi-export@yuchai.cn
www.yuchaihi.com



Specifications are subject to change without prior notice

Fuel consumption decreased by 10%

10%



A New Generation of YC85

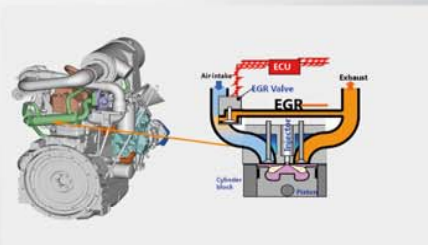
- Brand new appearance design
- King size cabin
- Outstanding operating performance
- One of the most powerful digging force excavators in the same size range
- Machine stability increased by 12%
- Grading ability increased by 50%
- Easy maintenance.



绿色动力

Power system fully upgraded

- Powered by international brand diesel engine.
- Advance intelligent combustion control diesel engine matched perfectly with hydraulic system, which has precise power output control according to various working condition with low fuel consumption, higher working efficiency and better operation reaction.



Quality improvement

- Integral pressed hoses are used for radiator oil return pipeline instead of steel pipes and fabric hoses combination, prevent from oil leaking.
- Two-stage back pressure system is adopted to ensure stable back pressure of oil compensation circuit, and increase slewing motor's durability.



▲ Two-stage back pressure design



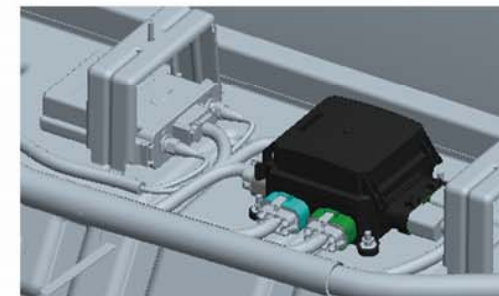
▲ Integral pressed hoses



▲ High torque traveling motor

High Quality Electrical System

- Electric wire is compliance with Japanese standard of automobile with excellent oil, fire, heat resistance, and mechanical property, meet with IP65 of electrical protection grade.



▲ Key electric parts are installed inside cabin, easily accessed and well protected.



▲ Central electric distribution box for fuse and relay integrated installing, easy for maintenance.



◀ DT type connector clip with better water-proof and more reliable.

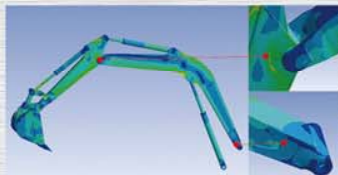


▲ Stereo radio with USB connector.

YC85-9 HYDRAULIC EXCAVATOR >>

- Monolithic steel plate is adopted for boom' up and down cover, prevent from welding defect with better structure reliability.

- Casting steel with partial strengthen design is adopted for front and rear end of boom to replace welding parts to get better structure strength.



- Higher and stronger outside beam is at the same level of mid-size excavator.

- The height of the dozer blade is increased by 10%, as well as improved shape to have higher efficiency.

- Steel plate pressed forming is adopted for engine hood, side panel and tool box etc.



- CAE software analyzing and optimizing, stiffness strength is better.

- Steel plate punching process is adopted for the side filter window to get long better durability.

- Reinforced steel crawler.



▲ Work in high temperature and high humidity conditions



▲ Work in plateau and high strength conditions.



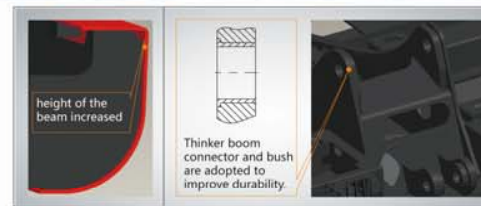
▲ Work in low temperature and cold conditions.



- Chassis frame is upgraded from "H" to "X", increase the strength and rigidity.



- High strength chassis structure.



- Height of the platform increased 33% to enhance the capacity of anti-bending and anti-torque as well as reducing the vibration of the cabin.

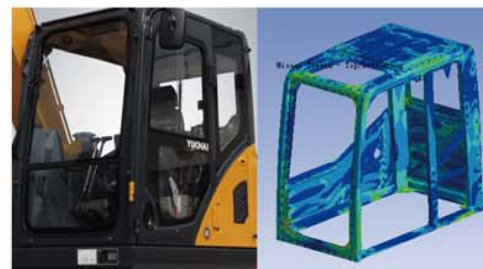


▲ Wide Vision

105%
Cabin space increased by



High strength cabin structure



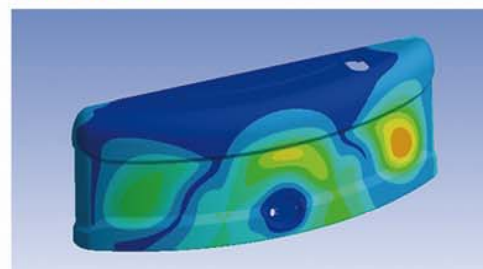
- ROPS/FOPS certified cabin

Luxury cabin



- Improved colorful monitor with higher resolution, better color saturation, wider screen.
- Reliable electric Safety Valve, easy to operate.

Low noise level

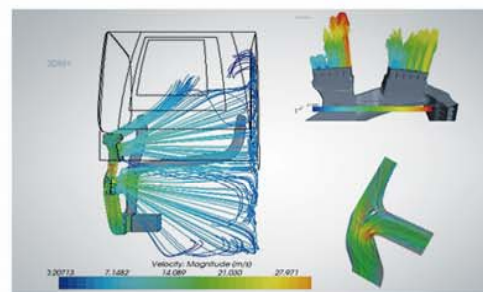


- Modal analysis, fan optimization, composite material technology are adopted to reduce work noise level
- Sound quality has been optimized to enhance ear comfort, as well as lowering the noise level
- Noise value is lower than Chinese National Noise Control Standard.



- Comfortable suspension seat.
- Separate design for the control box and the seat

Powerful A/C



- CFD value analysis is adopted to simulate A/C tuyere and duct, which ensure optimal blowing performance. A/C refrigeration output is increased by 19%, air blowing volume is increased by 54%.



- ▲ Face blowing vent
- ▲ Foot blowing vent

YC85-9 HYDRAULIC EXCAVATOR >>



● High precision Air filter.



● Steel plate pressed forming is adopted for engine hood.



● Standard working lamp on boom.



● Easy accessing design for all checking point.



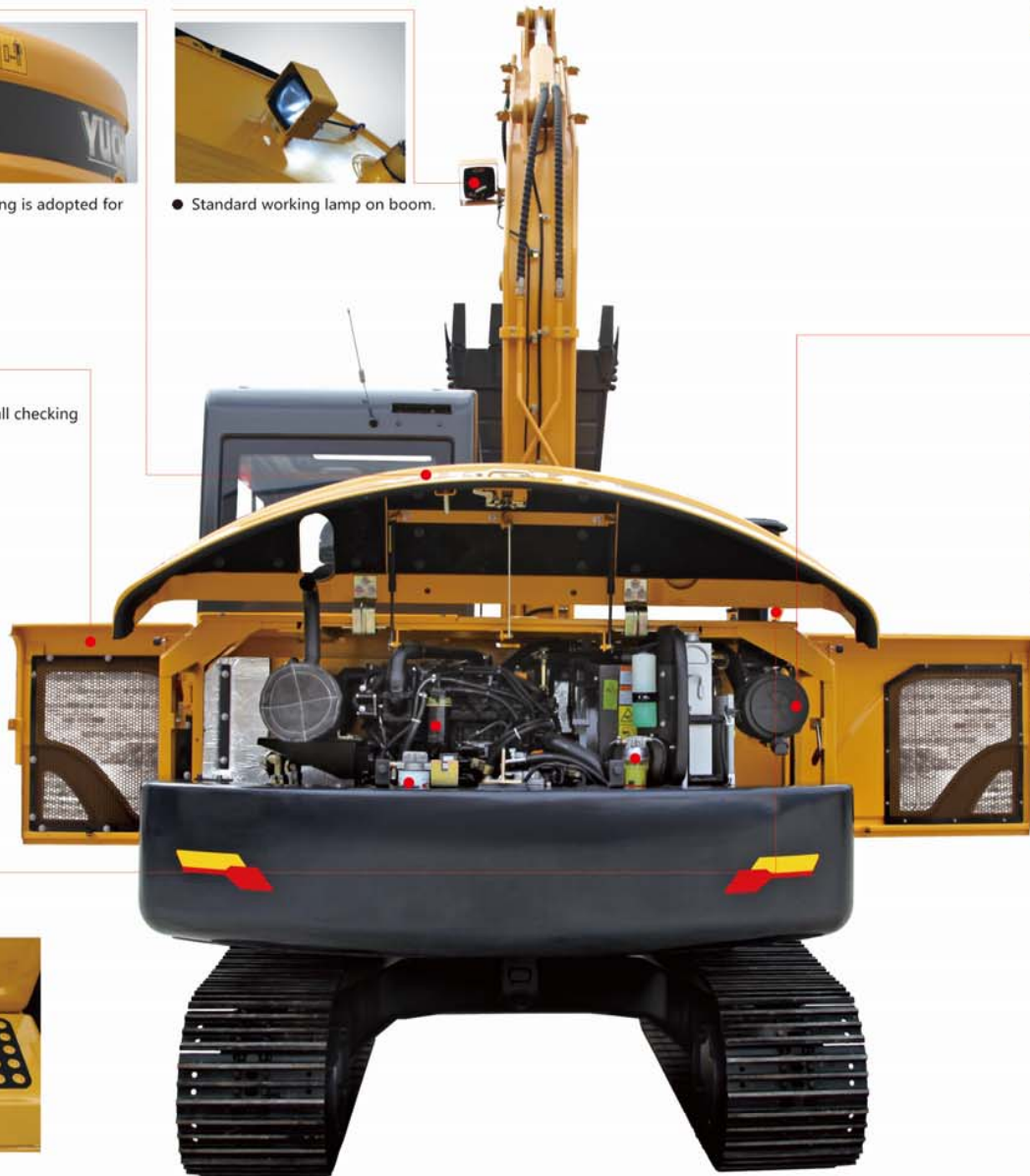
● National standard size large handrail.



● Big size tool box for various sundries.



● Bump non-slip.



Excellent accessibility



● Easy Air filter replacement.



● Fuel pre-filter.



● Fuel filter.



● Oil-water separator.



● Easy accessing Main Valve Block.